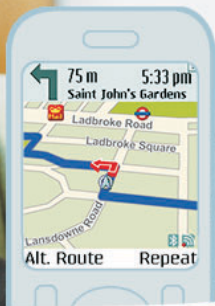


Manual Mobile Navigator English

Copyright © 2005 gate5 AG All rights reserved



smart2go™
you have arrived

INTRODUCTION	4
smart2go™ FOR SYMBIAN SERIES 60	7
smart2go™ FOR SYMBIAN SERIES 80	15
smart2go™ FOR SYMBIAN UIQ, POCKET PC AND PALM OS	23
smart2go™ FOR MS SMARTPHONE	31

- blank page -



You have chosen a smart2go™ Mobile Navigator. Congratulations! Please enjoy using it. The smart2go™ Mobile Navigator leads you straight to your destination, whether you are travelling by car or on foot. With smart2go™ you may navigate and plan your route etc. with a number of mobile devices such as Smartphones (MS Smartphone and Symbian OS) and PDAs (Palm OS and Pocket PC with Windows Mobile).

You may also use your digital holiday guide to plan your holiday to suit your personal preferences and interests and to save interesting destinations before you set off on your trip.

About the Hardware

A GPS receiver uses state-of-the-art GPS technology to pinpoint any destination. Bluetooth® technology provides a wireless connection between the GPS receiver and your Smartphone/PDA. The GPS receiver offers a wireless compact solution which requires no memory card slot or power supply from your Smartphone/PDA. You may therefore freely position the GPS receiver for optimum satellite reception.

System Requirements

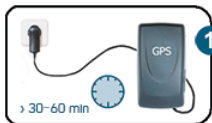
- Operating systems:
 - Symbian UIQ, Series 60 or 80 V1.0 or later
 - MS Smartphone or Windows Mobile 2003 for Pocket PC
 - Palm OS
- Wireless Bluetooth® technology (only for use with a GPS receiver)
- Available card slot for Secure Digital Card (SD), Multi Media Card (MMC), RS-MMC (reduced size MMC), miniSD, Transflash or MemoryStick Pro or Pro Duo

Product Registration

We recommend that all customers register their smart2go™ products. Registered users may qualify for upgrades of software and map data. Register online on: www.smart2go.com.

Further Information

The user manual, other manuals and further products are available on: www.smart2go.com.



1 Charge your GPS receiver (for at least 30 minutes) and then switch it on. (See manufacturer's recommendations.)



2 Simply insert the memory card and switch on the device. To obtain best results, please ensure your mobile phone is fully charged.



3 Place your GPS receiver in a position with an unobstructed view to the sky to create your first satellite connection. In a car, this will usually be on the dashboard. Either click on the smart2go™ icon in the menu of your mobile phone display or start the program via **Start** ⇒ **Programmes** (MS Smartphone and Pocket PC).

You activate the navigation system via the **Navigation** function within the smart2go™ Main Menu and the connection to the GPS receiver is created within Bluetooth®. It may take a few minutes to establish the first Bluetooth® connection.

You will find more important information on the following pages.



How do route guidance/navigation and route planning differ?

Route guidance and navigation are identical terms. Route guidance/navigation uses the GPS receiver to provide real-time navigation with a dynamic route map and dynamic voice commands. The route may be instantly recalculated, if you miss a turn. Route planning, however, provides a fixed list of directions and a map of each waypoint. It does not require the GPS receiver and provides voice commands only during simulation.

How do I answer phone calls when smart2go™ is running?

If you have a device with telephone function, you may answer your phone in the normal way when smart2go™ is running.

What is pedestrian mode?

Route planning and navigation may be set to pedestrian mode, which also allows travel against the direction of one-way streets.

Where do I buy maps for other regions and further premium guides?

Please visit the smart2go™ download shop at www.smart2go.com.

Help Files and Technical Support

If you have any problems using smart2go™, please access the Help files.

- Symbian Series 60: please press **Options** ⇒ **Help**.
- Symbian Series 80: please visit www.smart2go.com.
- Symbian UIQ, Palm OS and Windows Mobile: please press the Help icon.
- MS Smartphone: please press **Menu** ⇒ **Help**.

You may receive technical support online under www.smart2go.com or via e-mail at navigator@support.gate5.net.

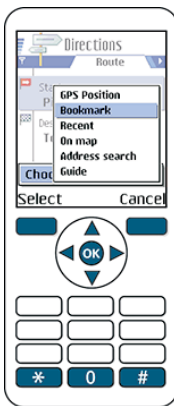


Once you have inserted the memory card in your device, the smart2go™ symbol will appear at the bottom of your mobile phone's Main Menu.

- Select the **smart2go™ symbol** and press your joystick (in the centre).

After a short period of time the smart2go™ main menu will appear (see next page).

Joystick and Key Functions



You press the joystick (up or down) to view the menu items (e.g. Navigation). To select menu items press the joystick again (in the centre).

You press the joystick (left, right, up, down) to move across the general map in the desired direction. Press the * key to zoom in on the map and the # key to zoom out. Use the 0 key to toggle between the 2D and 3D modes.

Key Functions on each Side of the Joystick

The key functions on each side of the joystick are displayed above the keys (e.g. Select, Cancel, etc.)

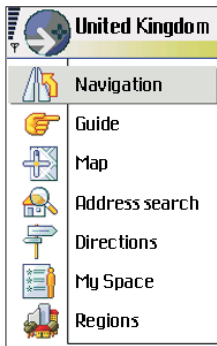
These keys are used to start a function or to open a further submenu.

A function may be selected by either pressing the joystick or the appropriate key.

To return to the Main Menu at any time, simply press **Options** and select **smart2go™ Home**.



You may access all smart2go™ functions via the Main Menu.



The **Navigation** system will take you from A to B along the shortest or quickest route. You may either let your GPS receiver establish your starting position or select it yourself. You may select your destination point under Guides, by consulting the General Map or carrying out an Address Search.

Alternatively, you may first open a **Guide** (e.g. a city guide) and search for your destination by entering categories (e.g. sights or hotels) at your destination. You may then use these for navigating, or save the location as a Bookmark.

You may also investigate a town/city or its surroundings on a **Map** (general map) and select places or points of interest to you. You may also use these e.g. for navigation or for planning your route.

An **Address Search** will enable you to perform a search by entering information such as a street and town/city. You may then select a hit from the Hit List and e.g. start your route guidance.

The **Route Planning** (Directions) system will calculate a route in advance and provide you with a precise route description.

All your favourite destinations, (e.g. which you have found in the Guides, from an Address Search, etc.), are saved as **Bookmarks (MySpace)**. There is no need to perform repeated searches for those destinations.

Under **Regions** you may choose a certain region (e.g. a town/city/country) from the Maps provided. The selection of Guides and Bookmarks available depends on the region you have chosen.



You may only navigate with a GPS receiver. Navigation voice commands will guide you along the shortest or quickest route from A to B.

- Select **Navigation** in the Main Menu and press the joystick.

The GPS status and your location are displayed under **Start**.

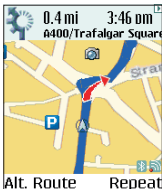


- Then press the joystick (up or down) to select **Destination** and then press the joystick (in the centre).
- Press the joystick again to open a selected menu.
- You may choose your destination using your Bookmarks, a Map, an Address Search or Guides.
- Press **Select** to enter a destination.

Route Guidance Options

- Press the joystick to the right to select the (fastest or shortest) route and (car or pedestrian) mode.
- Press the joystick to the left to return to the navigation.
- Then select **Options** ⇒ **Start Navigation**.

The navigation Map will now appear. It will show the route in blue. The red arrow will indicate the direction. A white arrow will identify your current position. If you have to turn off along your journey, you will receive a voice command.



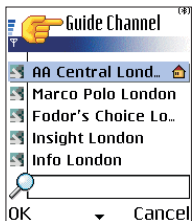
You can adjust the volume with the joystick (up or down). If you wish to change to the detailed view, press the joystick to the right. Press it to the left, if you wish to reopen the navigation Map. Press to the right twice to display GPS properties. If you wish to return to the Navigation Map, press to the left twice.

You may press the joystick in the centre to view the options (close 3-D map, Stop Navigation, etc.).



There are a number of easy-to-find Guides available (e.g. Info UK, Merian, city guides, etc.), which supply interesting information about your surrounding area.

- Select **Guide** in the Main Menu and press the joystick.
- Select a Guide and press **OK**.

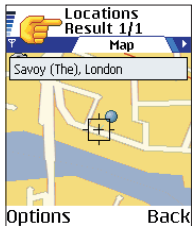


Initially, the selected Guide will display the different categories (hotels, bars, museums etc.).

- Select a category and press the joystick. (If there are subcategories, select a subcategory and press the joystick again.)

The Hit List will appear.

- Select an item in the Hit List and press the joystick to open the General Map.
 - Or press the joystick to the right to open the search function.
 - Enter a search term and press **Done**.
- You will start the search via **Options** ⇨ **Search**.
 - Select an item in the Hit List and press the joystick to open the General Map.
 - Press the joystick to the right to display the Detail tab.



Premium Guides, available on www.smart2go.com, contain many interesting details, such as contact information, prices, opening times, etc.

- Press the joystick to the left to display the General Map again.
- Open a menu by pressing the joystick.

You may use the menu, e.g. to apply a Bookmark to a favourite location, use this location for the route guidance/route planning utility or to call a location directly and to send contact information as a text message.

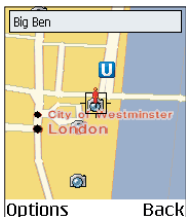


HOW DO I SELECT ADDRESSES ON THE MAP?

The Map (General Map) not only shows roads and squares, but also points of interest such as restaurants, cultural attractions, multi-storey car parks, etc.

- Select **Map** in the Main Menu and press the joystick (in the centre).

The General Map will now appear in the display.



- Use the joystick to move (right, left, up, down) across the General Map in the desired direction .
- Point the cursor at the symbol of a location to obtain more detailed information.
- Press the * key to zoom in on the map and press the # key to zoom out. Use the 0 key to toggle between the 2D and 3D modes.

Options

- Via the **Options** Menu you may e.g. use a selected location to start navigating or planning your route, switch to the Address Search, or open the list of Bookmarks, etc.
- Press **Back** to return to the Main Menu.
- When you open the General Map via route guidance or route planning, you may accept that location to set your destination or starting point.

Joystick Functions

- Press the joystick (in the centre) to open a menu.
- In the open menu, you may then select a location for route guidance (navigation) or route planning, to save it as a Bookmark, or to perform a search of the surrounding area.

HOW DO I USE THE ADDRESS SEARCH?



When you wish to navigate or plan your route, you may search your destination addresses using the Address Search function. Alternatively, you may wish to pinpoint a specific location.

- Select **Address Search** in the Main Menu and press the joystick.
- Press the joystick (up or down) to select a field and then press the joystick in the centre.

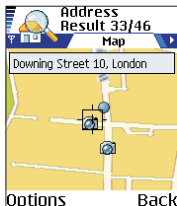
The screenshot shows a form titled "Address search" with a magnifying glass icon and a keyboard icon. It has three input fields: "Number" with the value "10", "Street" with the value "Down", and "City:" with the value "Lon". At the bottom right of the form is a "Done" button.

- Enter address information in the **Street** and **City** field (at least three characters in each field). The **Number** field is not mandatory.
- Confirm by pressing **Done**.
- You may start the search via **Options** ⇨ **Search**.

The Hit List will be displayed.

- Select an address item and press the joystick.

A Map will now appear showing the location you have selected.



- Press the joystick to open the menu. You may e.g. start navigating or planning your route, or save a favourite location as a Bookmark.
- Via the **Options** Menu you may return to the Main Menu at any time or access functions such as Full View, Map Info, etc.
- Press the * key to zoom in on the map and the # key to zoom out. Use the 0 key to toggle between the 2D and 3D modes.



Using the route planning system, you may calculate your route in advance and obtain an exact route description. You may use your present GPS location as your starting point or enter starting and destination points of your choice.

- Select **Route** in the Main Menu of smart2go™ and press the joystick.

The Route Planner will appear displaying the **Route** tab.

- Select **Start** and **Destination** by pressing the joystick.



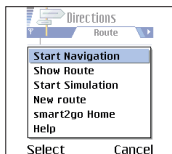
A pop-up menu will now appear. Here you may choose how you wish to select a location. There are different ways of choosing your starting and destination points: you may select a location using the GPS position, your Bookmarks, a Map, an Address Search or Guides. Alternatively, you may select a recently used location as your starting and destination points.

- Press **Select** to enter a starting position and destination address.

Route Type and Mode

- Press the joystick to the right to select the (fastest/ shortest) route and (car/pedestrian) mode.
- Press the joystick to the left to return to the route.

Route Planning Options



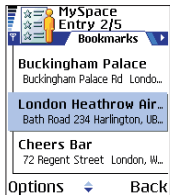
From here, you may directly start navigating (see section 'How do I navigate with GPS?') or calculating your route. To view a list of waypoints, press the joystick to the right. You may also use the joystick to display the Navigation Map, simulate a route, enter or select a new route, switch to the Main Menu and open a short help text.



How do I manage my bookmarks?

The Bookmarks page contains the destinations you have saved as Bookmarks (e.g. from the Guides, from your Address Search, etc.) and your recently chosen points of interest. Your Bookmarks are always linked to your present region (see below).

- Select **Bookmarks** in the Main Menu of smart2go™ and press the joystick.
- In the list of Bookmarks you may open a General Map with the Bookmark either by pressing the joystick or via **Options** ⇨ **Open**.
- Then press the joystick to open the selected menu.



You may use a Bookmark, for example, for navigating and planning your route or for initiating a search in the surrounding area. You may also manage (save, rename, send and delete) your Bookmarks here.

How Can I Select the Region I Seek?

The entire collection of the Maps (e.g. of European capitals) saved on your memory card may be displayed here. You may also purchase additional Maps (regions, countries, etc.) and Guides. The Guides and pre-defined Bookmarks are assigned to specific Regions.

- Select **Regions** in the Main Menu of smart2go™ and press the joystick.

All the Regions of your memory card may be displayed here. You may select Regions/Cities of your choice. Having selected a Region it will appear at the top of the display in the Main Menu, so that you may easily see which Region you have just activated.

You will find a large selection of further Maps and interesting Premium Guides on www.smart2go.com.



Having inserted the memory card in your device, the smart2go™ symbol will appear in your mobile phone's Main Menu.

- Select the **smart2go™ PRO-symbol** and press the joystick (in the middle), ENTER or **Open**.

After a short period of time the smart2go™ Main Menu will appear (see next page).

Joystick and Arrow Keys



You may press the joystick or the arrow key to the right to switch to the submenu. Press the joystick or the arrow key to the left to switch to the Main Menu.



You may press the joystick or the arrow key (up or down) to view the menu items (e.g. **Navigation**). To select menu items, please press the joystick again (in the centre), ENTER or **Open**.

0

The Functions of the Keys on the right-hand side of the Display

The key functions are displayed to the left of the keys (e.g. Open, Cancel, Address Search, Back, etc.).



Joystick in the General Map

You may press the joystick (left, right, up, down) to move across the General Map in the desired direction. Press the (+) key to zoom in on the Map and press the (-) key to zoom out. Use the 0 button to toggle between the 2D and 3D modes.



You may access all smart2go™ functions via the Main Menu.

The **Navigation** will guide you from A to B along the shortest or quickest route. You may either let your GPS receiver establish your starting position or select it yourself. You may select your destination under Guides, or by consulting a Map or Address Search.

Alternatively, you may initially open a **Guide** (e.g. a city guide) under Services and search for your destination by entering categories (e.g. sights or hotels). You may then use that destination for navigating, or save the location as a Bookmark.

You may also explore a town/city or its surroundings on a **Map** (under Functions) and select places or points of interest to you. You may also use these for navigation and for route planning .

An **Address Search** (under **Functions**) will enable you to perform a search by entering address information (street and town/city). You may then select a hit from the Hit List and e.g. start navigating.

Route guidance (**Directions** under **Functions**) will calculate a route in advance and provide you with a precise route description.

All your favourite destinations which you have found in the Guides, from an Address Search, etc., are saved as **Bookmarks** (**MySpace** under **Functions**). There is no need to perform repeated searches for those destinations.

Under **Regions** you may choose a certain Region (e.g. town/city/country) from the Maps provided. The selection of Guides and Bookmarks available depends on your chosen Region.

Under **Settings** you may determine the Map settings (Which items are to be displayed on the Map?) and the navigation settings (e.g. distance unit). Furthermore, you may enter home and office addresses for ease of selecting those addresses for navigation. How to enter the address data is described in the section entitled "How do I use the Address Search?".



You may only navigate with a GPS receiver. Navigation voice commands will guide you along the shortest or quickest route from A to B.

- In the Main Menu select **Navigation** with the joystick.

The GPS status and your location are displayed under **Start**.

- Press the joystick to the right to open the submenu.

Navigation Options

- Press **Option** to select the (fastest/ shortest) route and the (car/pedestrian) mode.
- Press **Done** to save the route options.
- Select **Destination** and start Navigation
- You may select your home or office address as destination. (If necessary, you will have to enter address data).
- Or you may choose your destination using your Bookmarks, the Map, the Address Search or Guides or recently used destinations (using your joystick).
- Press **Select** to enter a destination.

Your route guidance will now be calculated and the navigation Map will appear. It will show the route in blue. The red arrow will indicate the direction. A white arrow will identify your current position. If you have to turn off along your journey, you will receive a voice command in good time.



You may adjust the volume with the joystick (up or down). Under **Options** you may turn the 3D map on or off. And you may repeat your voice commands, select an alternative route, etc. or stop the navigation at any time.



There are a number of easy-to-find guides available (e.g. Info UK, Merian, city guides, etc.) which supply interesting information about your surrounding area.

- Select **Services** in the Main Menu.
- Press the joystick to the right to open list of Guides.
- Select a **Guide** and press the joystick or **Open**.

Initially, the selected Guide will display the different categories (hotels, bars, museums etc.).

- Select a category and press the joystick.

If there are any subcategories, they will be displayed on the right.

- Select the desired subcategory and press the joystick.

The Hit List and General Map will appear side by side (see screenshot).

- Or press the **Search** key to open the search function.
- Enter a search term and press **Search**.

The Hit List and General Map will appear side by side.



- Press **Detail** to display the detailed view.

Premium Guides, available on www.smart2go.com, contain many interesting details, such as contact information, prices, opening times, etc.

- Press **Back** to display the General Map again.
- Press **Context Menu** to open it.

You may use this menu e.g. to allocate a Bookmark to a favourite location, use this location for route guidance/route planning or to call a location directly and to send contact information as a text message.

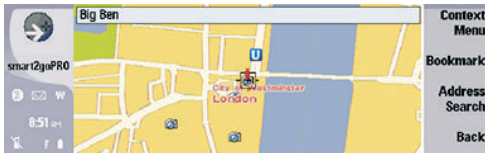


HOW DO I SELECT ADDRESSES ON THE MAP?

The Map (General Map) not only shows roads and squares, but also points of interest such as restaurants, cultural attractions, multi-storey car parks, etc.

- Select **Functions** in the Main Menu, press the joystick to the right and select **Map** (with **Open** or joystick).

The General Map will now appear in the display.



- Use the joystick to move (right, left, up, down) across the General Map in the desired direction.
- Point the cursor at the symbol of a location to obtain more detailed information.
- Press the (+) key to zoom in on the Map and press the (-) key to zoom out. Use the 0 key to toggle between the 2D and 3D modes.

Options

- Via the Context Menu you may e.g. use the selected location for route planning/route guidance, save it as a Bookmark, or perform a search of the surrounding area.
- Press **Bookmarks** to open a list of favourites.
- Press **Address Search** to switch to the Address search.
- Press **Back** to return to the Main Menu.
- When you open the General Map via the route guidance or route planning systems, you may **Select** this location directly to determine your destination or starting point.

HOW DO I USE THE ADDRESS SEARCH?



When you wish to navigate or plan your route, you may search your destination addresses using the Address Search function. Alternatively, you may wish to pinpoint a specific location.

- Select **Functions** in the Main Menu, press the joystick to the right and select Address Search (with **Open** or joystick).
- Enter the address information in the **Street** and **City** field (at least three characters in each field). The **number** field is not mandatory.
- Then press **Search**.

The Hit List and General Map will appear side by side.



When you select an address item from the Hit List, the corresponding Map section will be displayed on the right.

Context Menu

- You may e.g. start navigating or planning your route, or save a favourite location as a Bookmark.

Map Options

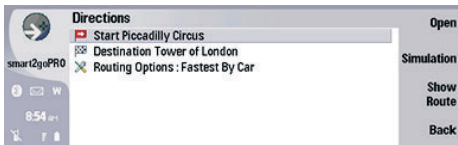
- Press **Map** to select Full display (without Hit List).
- Press the (+) key to zoom in on the Map and press the (-) key to zoom out. Use the 0 key to toggle between 2D and 3D modes.
- Press **Back** to go back one level.



Using the route planning system, you may calculate your route in advance and obtain an exact route description. You may use your present GPS location as your starting point or enter starting and destination points of your choice.

- Select **Functions** in the Main Menu, press the joystick to the right and select **Route** (with **Open** or joystick).

The Route Planner will be displayed.



- Select **Start** and **Destination** by pressing the joystick.

A pop-up menu will now appear. Here you may choose how you wish to select a location. There are different ways of choosing your starting and destination points: you may select a location using the GPS position, your Bookmarks, a Map, an Address Search or Guides. Alternatively, you may select a recently used location as your starting and destination points.

Press **Select** to enter a starting position and destination address.

Routing Options

- Select **Routing Options** to select the (fastest or shortest) route and (car or pedestrian) mode.
- Confirm your options by pressing **Done**.

Route Planning Functions

From here, you may start a **Simulation** or just display the **Route** when you will see a list of waypoints to the left and the Navigation Map to the right.

Furthermore, you may open the **Context Menu** to start route guidance or to enter or select a new route.



How Do I Manage my Bookmarks?

The Bookmarks page contains the destinations you have saved as Bookmarks (e.g. from the Guides, from your Address Search, etc.) and your recently chosen points of interest. Your Bookmarks are always linked to your present Region (see below).

- Select **Functions** in the Main Menu, press the joystick to the right and select **Bookmarks** (with **Open** or joystick).
- In the list of Bookmarks (to the left) you may select a destination.

In the **Context Menu** you may use a Bookmark, for example, for navigating and planning your route or for initiating a search in the surrounding area. You may also manage (save, rename, send and delete) your Bookmarks here.

When you select **Detail** you may manage your Bookmarks (i. e. rename and delete).

How Can I Select the Region I Seek?

The entire collection of the Maps (e.g. of European capitals) saved on your memory card is displayed here. You may also purchase additional Maps (regions, countries, etc.) and Guides. The Guides and pre-defined Bookmarks are assigned to specific Regions.

- Select **Regions** in the Main Menu of smart2go™ (with **Open** or joystick)

All Regions of your memory card may be displayed here. You may select Regions/Cities of your choice. Having selected a Region it will appear at the top of the display in the Main Menu, so that you may easily see which Region you have just activated.

You will find a large selection of further maps and interesting Premium Guides on www.smart2go.com.



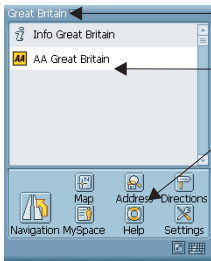
Once Having inserted the memory card in your device, the smart2go™ symbol will appear under **Start** ⇨ **Programs**. (By using Symbian UIQ and Palm OS devices it will appear in your mobile phone's Main Menu.)

- Select the **smart2go™ symbol** with your pen.

After a short period of time the smart2go™ Start Menu will appear.

- If you want to start your route guidance straight away, press **Navigation** (see description on the page after next).
- Otherwise press **Find See Do** to search for information on a location or to plan your journey.

This is the Main Menu of smart2go™.



Select (Region) Database

You may choose from a variety of regional Maps here.

Select Guide

You may select a Guide from this list.

Select Pages

Via the icons, you may start your route guidance and route planning, open the General Map, Address Search and Options. Under "MySpace" you will find the locations to which you have allocated Bookmarks. On the other pages the same icons are located at the bottom.

Joystick and Pen in the Navigation Map

Use the pen or joystick (if existent) to move across the General Map in the desired direction.

Open Context Menu

On most of the pages you may open the Context Menu with the **Toothed Wheel** icon to perform important functions.

- Click the **Home** icon to return from any level to the Main Menu.



Via the Main Menu (see screenshot on previous page) you may access all smart2go™ functions using the pen.

The **Navigation** guides you from A to B along the shortest or quickest route. You may either let your GPS receiver establish your starting position or select it yourself. You may select your destination point under Guide, or by consulting a Map or Address Search.

Alternatively, you may initially open a **Guide** (e.g. a travel guide) and search for your destination by entering categories (e.g. sights or hotels). You may then use these for navigating, or save the location as a Bookmark.

You may also explore a town/city or its surroundings on a **Map** (General Map) and select places or points of interest. You may also use these for navigation and for planning your route.

An **Address Search** will enable you to perform a search by entering information about a place of interest (street and town/city). You may then select a hit from the Hit List and start navigating.

The **Route Guidance (Directions)** system will calculate a route in advance and provide you with a precise route description.

The **Bookmarks** page (**MySpace**) will display all destinations which you have saved as Bookmarks (e.g. from the Guides, an Address Search etc.) There is no need to perform repeated searches for those destinations.

Under **Regions** (at the top of the Main Menu) you may choose a certain Region (e.g. town/city/country) from the Maps provided. The selection of Guides and Bookmarks available depends on your chosen Region.

Under **Options** you can determine following settings: Distance unit, language and address data of your home and office. You may then easily select these data for a navigation.

Under **Help** you will find a short explanation how to use smart2go™.



You may only navigate with a GPS receiver. Navigation voice commands will guide you along the shortest or quickest route from A to B.

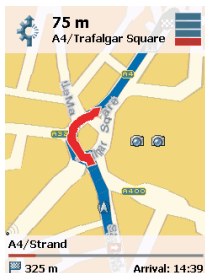
- Select **Navigation** in the Start Menu or the Main Menu.

The Navigation page opens, with the **Route** tab. The GPS status (arrow symbol) and your location are displayed under **Start**.

- If necessary you may press the **Settings** tab and determine your route calculation settings: fastest/shortest route or car/pedestrian mode.

Select Destination (Route tab)

- You may choose your destination using your Bookmarks, a Map, Address Search or Guides or may select your home/office address or a recently used location.
- The route guidance system will either start automatically or after selecting a destination (e.g. from a Map).



The navigation Map will now appear and will show the route in blue. The red arrow will indicate the direction. A white arrow will identify your current position. If you have to turn off along your journey, you will receive a voice command in good time.

You may adjust the volume with the joystick (up or down). If you wish to change to the Detailed View, press the joystick to the right. Press it to the left, if you wish to reopen the navigation Map.

Navigation Options

Touch the screen with the pen to view the navigation Options. You may select an alternative route, repeat the voice commands, toggle between 2D and 3D, select night mode or stop the navigation.

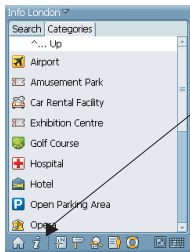


There are a number of easy-to-find guides available (e.g. Info UK, Merian, city guides, etc.) which supply interesting and important information about your surrounding area.

- In the smart2go™ Main Menu select the **Guide** you wish to use (e.g. Info UK).

You may search for destinations using **Categories** or **Search**.

- Make your selection using the tabs.



Under **Categories** you make select from the different categories of the Guide (e.g. care hire, hotels, bars, museums etc.). Premium Guides - e.g. Merian UK - also offer subcategories. Via the logo of the Guide you will return to the first level of the Guide.

- Using the pen select a category (and if necessary a subcategory) to view the Hit List.
- Or open the **Search** tab.
- Enter a search term and select a category or a position.
- Select **Search** to start the search.

A Hit List will be displayed. When selecting a hit, the corresponding item will be displayed on the Map.

Map/Detailed View

You may use the tabs to toggle between Map or Detailed View. Premium Guides, available on www.smart2go.com, contain many interesting details, such as contact information, prices, opening times, etc.

Context Menu

- Press the **Toothed Wheel** icon to open the Context Menu.

You may use this menu e.g. to allocate a Bookmark to a favourite location, to select this location for route guidance/route planning or to call a location directly and send contact information as a text message.

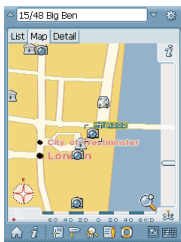


HOW DO I SELECT ADDRESSES ON THE MAP?

The Map (General Map) not only shows roads and squares, but also points of interest such as restaurants, cultural attractions, multi-storey car parks, etc.

- To start this function, use the pen to press on the **Map** icon.

The General Map will now appear in the display.



- Use the pen or joystick to move (right, left, up, down) across the General Map in the desired direction.
- Point the cursor at the symbol of a location to display its name.
- Use the **i-symbol** (top right) to select locations to be displayed on the Map.
- Use the scroll bar on the right to zoom in or out on the map.
- Use the symbol (bottom right-hand corner) to toggle between 2D and 3D view.

Context Menu

- Press the **Toothed Wheel** icon to open the Context Menu.

You may use your selected location e.g. for route guidance and route planning or to save it as a Bookmark.

When you open the general map via the route guidance or route planning system, you may **Select** a location directly as your start/destination.



When you want to navigate or plan your route, you may search your destination addresses in the Address Search. Alternatively, you may wish to pinpoint a specific location.

- To start this function, use the pen to press on the **Address** icon.

The Address Search will now appear in the display.

Number:

Street:

City:

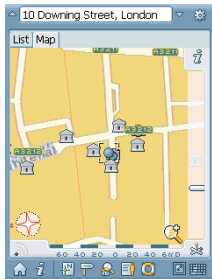
123 1 2 3 4 5 6 7 8 9 0 = + ↵
Tab| q w e r t y u i o p []
CAP| a s d f g h j k l ; ' |
Shift| z x c v b n m , . / ←
Ctrl| Alt| \ | ↑ ↓ ← →

- Select a field with your pen.
- Enter address information in the **Street** and **City** field (at least three characters in any one field). The **Number** field is not mandatory.

To enter the address information use the keyboard the bottom edge of the screen. You may switch it on and off using the icon in the bottom right-hand corner.

- Confirm by pressing **OK**.
- smart2go™ will display a Hit List.
- Select an address from the Hit List.

A Map with the selected location will be displayed. (By using Palm OS press the joystick to the right or open the **Map** tab.)



Context Menu

- Press the **Toothed Wheel** symbol to open the Context Menu.

You may e.g. start navigating or planning your route, or save a favourite location as a Bookmark etc.

Further Options

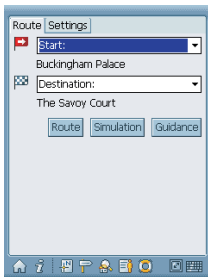
- Use the scroll bar on the right to zoom in or out on the Map.
- Use the symbol (in the bottom right-hand corner) to toggle between 2D and 3D view.
- Use the **Home** icon to return to the Main Menu from any level.



Using the route planning system, you may calculate your route in advance and obtain an exact route description. You may use your present GPS location as your starting point or enter starting and destination points of your choice.

- To start this function, use the pen to press on the **Directions** icon.

The Route Planner will be displayed showing the **Route** tab.



Route Type and Mode

- If necessary, open the **Settings** tab to change the type of route (shortest or fastest) and the mode (by car or on foot).

Select Route

- In each case, select the **Start** and **Destination**.

You may choose your start and destination via your GPS-position, Bookmarks, a Map, an Address Search or Guides. Alternatively, you may select a recently used location as your starting and destination points.

- Press **Select** to confirm a Start or Destination address and then press **Route**.

Route (Summary and List)

Once smart2go™ has calculated the route, the **Summary** tab will appear, displaying the Start, Destination, Distance, etc. The **List** tab will display a detailed list of waypoints.

Simulation

Start the simulation with the pen. When you touch the screen with the pen, a navigation menu will appear. You may select an alternative route, repeat voice commands, toggle between 2D and 3D, select night mode and send the destination address.

Guidance

You may start your route guidance (navigation) directly.



How Do I Manage my Bookmarks?

The Bookmarks page (Myspace) contains the destinations you have saved as Bookmarks (e.g. from the Guides, from your Address Search, etc.) and your recently chosen destinations. Your Bookmarks are always linked to your present region (see below).

- To start this function, use the pen to press on the **MySpace** icon.
- You may select a Bookmark from the list using the pen.

A map with the destination will now open.

You may now use this Bookmark, for example, for your route guidance or route planning or to initiate a search for interesting locations in the surrounding area. You may also delete your Bookmarks here.

How Can I Select the Region I Seek?

The entire collection of the Maps (e.g. of European capitals) saved on your memory card is displayed here. You may also purchase additional Maps (regions, countries, etc.) and Guides. The Guides and pre-defined Bookmarks are assigned to specific Regions.

- Open the list of available **Regions/Cities** by touching the Main Menu at the top using the pen and make your selection.

Having selected a Region it will appear at the top of the display in the Main Menu, so that you may easily see which Region you have just activated.

You will find a large selection of further Maps and interesting Premium Guides on www.smart2go.com.

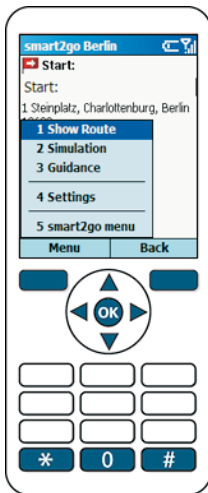


Once you have inserted the memory card in your device, the smart2go™ symbol will appear at the bottom of your mobile phone's Main Menu.

- Enter the number which is stated before **smart2go™ symbol** or select the **smart2go™ symbol** and press your joystick (in the centre).

After a short period of time the smart2go™ main menu will appear (see next page).

Joystick and Key Functions



To select menu items press the adequate number (e.g. **1 for Navigation**).

Or you select the menu items (e.g. Map) with the joystick (up and down). To select the item press the joystick again (in the centre).

You press the joystick (left, right, up, down) to move across the general map in the desired direction. Press the * key to zoom in on the map and the # key to zoom out. Use the 0 key to toggle between the 2D and 3D modes.

Key Functions beneath the Display

The functions of the outer keys are displayed above the keys (e.g. Menu, Back, etc.)

These keys are used to start a function or to open a further submenu.

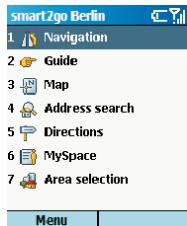
A function may be selected by either pressing the joystick or the appropriate key.

To return to the Main Menu at any time, simply press **Home**.

With the arrow to the left you may always step back to the lower level.



You may access all smart2go™ functions via the Main Menu.



The **Navigation** system will take you from A to B along the shortest or quickest route. You may either let your GPS receiver establish your starting position or select it yourself. You may select your destination point under Guides, by consulting the General Map or carrying out an Address Search.

Alternatively, you may first open a **Guide** (e.g. a city guide) and search for your destination by entering categories (e.g. sights or hotels) at your destination. You may then use these for navigating, or save the location as a Bookmark.

You may also investigate a town/city or its surroundings on a **Map** (general map) and select places or points of interest to you. You may also use these e.g. for navigation or for planning your route.

An **Address Search** will enable you to perform a search by entering information such as a street and town/city. You may then select a hit from the Hit List and e.g. start your route guidance.

The **Route Guidance (Directions)** system will calculate a route in advance and provide you with a precise route description.

All your favourite destinations, (e.g. which you have found in the Guides, from an Address Search, etc.), are saved as **Bookmarks (MySpace)**. There is no need to perform repeated searches for those destinations.

Under **Regions** you may choose a certain region (e.g. a town/city/country) from the Maps provided. The selection of Guides and Bookmarks available depends on the region you have chosen.

Under **Menu** you may determine the settings (e.g. distance unit). Furthermore, you may enter home and office addresses. You also may find a short explanation how to use smart2go™ or finish the program. You always may return to the smart2go™ Main Menu.



You may only navigate with a GPS receiver. Navigation voice commands will guide you along the shortest or quickest route from A to B.

- Press **1** or select **Navigation** and then press the joystick.

The GPS status and your location are displayed under **Start**.

Select Destination

- With the joystick you may select as **Destination** your home or office address. Or you may choose your destination using the Address Search, your Bookmarks a Map or Guides.
- You define the destination from e.g. the Map or the Address Search by pressing **Select**.

Navigation Settings / Mode

- Select **Menu** ⇨ **Settings**.

You may determine your route calculation settings (fastest/shortest) and the modus (car/pedestrian).

- Press **Done** to return to the navigation.

Navigation



The route guidance system will start automatically after selecting a destination. The navigation Map will now appear. It will show the route in blue. The red arrow will indicate the direction. A white arrow will identify your current position. If you have to turn off along your journey, you will receive a voice command.

- You can adjust the volume with the joystick (up or down).
- If you wish to change to the detailed view, press the joystick to the right. Press it to the left, if you wish to reopen the Navigation Map.

Navigation Options

You may press the joystick in the centre to view the options (Send, Save Waypoints, Close/Open 3-D Map, Stop Navigation, etc.).



There are a number of easy-to-find Guides available (e.g. Info UK, Merian, city guides, etc.), which supply interesting information about your surrounding area.

- Press **2** or select **Guide** and then press the joystick.
- Select a Guide by pressing a number or the joystick.



Initially, the selected Guide will display the different categories (hotels, bars, museums etc.).

- Select a category and press the joystick. (If there are subcategories, select a subcategory and press the joystick again.)

The Hit List will appear.

Search function

- Press the joystick to the right to switch from the **Categories** tab to the **Search** tab.
- Select a search field with the joystick.
- Enter a search term and press **Done**.
- You will start the search via **Menu** ⇒ **Search**.

The Hit List will appear.

- Select an item in the Hit List and press the joystick to the right to open the General Map.
- Press the joystick once more to the right to display the **Detail** tab.

Premium Guides, available on www.smart2go.com, contain many interesting details, such as contact information, prices, opening times, etc.

- Press the joystick to the left to display the General Map again.

Context Menu

- Open the **Context Menu** by pressing the joystick.

You may use the menu, e.g. to apply a Bookmark to a favourite location, use this location for the route guidance/route planning utility or to call a location directly and to send contact information as a text message.

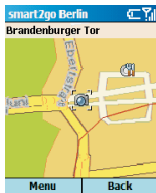


HOW DO I SELECT ADDRESSES ON THE MAP?

The Map (General Map) not only shows roads and squares, but also points of interest such as restaurants, cultural attractions, multi-storey car parks, etc.

- Press **3** or select **Map** and then press the joystick.

The General Map will now appear in the display.



- Use the joystick to move (right, left, up, down) across the General Map in the desired direction.
- Point the cursor at the symbol of a location to obtain more detailed information.
- Press the * key to zoom in on the map and press the # key to zoom out. Use the 0 key to toggle between the 2D and 3D modes.

Menu functions

- Select **Menu**.
- From here, you may directly calculate your route or start an Address Search.
- Use the **Map info layer** to select locations to be displayed on the Map.
- You may set the properties of your GPS position.

Context Menu

- Open the Context Menu by pressing the joystick.
- You may use the selected object e.g. for the route guidance or navigation, save it as a Bookmark or poste the location data via SMS.
- When you open the General Map via route guidance or route planning, you may **Select** that location to set your destination or starting point.



When you wish to navigate or plan your route, you may search your destination addresses using the Address Search function. Alternatively, you may wish to pinpoint a specific location.

- Press **4** or select **Address Search** and then press the joystick.
- Press the joystick (up or down) to select a field and then press the joystick in the centre.

smart2go Berlin

Number:
1

Street:
pots

City:
ber

Search Cancel

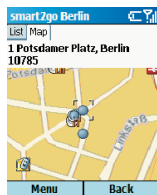
- Enter address information in the **Street** and **City** field (at least three characters in each field). The **Number** field is not mandatory.
- Confirm by pressing **Done**.
- You start the search by pressing **Search**.

The Hit List will be displayed.

- Select an address item and press the joystick to the right.

A Map will now appear showing the location you have selected.

- Press the * key to zoom in on the map and the # key to zoom out. Use the 0 key to toggle between the 2D and 3D modes.



Menu functions

From the **Menu** you may switch the the full screen mode or return to the Main Menu.

Context Menu

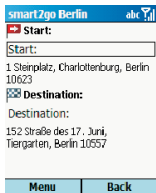
- Open the Context Menu by pressing the joystick.

You may use the selected object e.g. for the route guidance or navigation, save it as a Bookmark or poste the location data via SMS.



Using the route planning system, you may calculate your route in advance and obtain an exact route description. You may use your present GPS location as your starting point or enter starting and destination points of your choice.

- Press **5** or select **Directions** and then press the joystick.

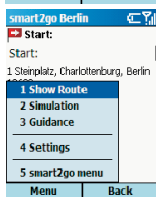


The Route Planner will appear displaying the Route tab.

- Select **Start** and **Destination** by pressing the joystick.

A pop-up menu will now appear. Here you may choose how you wish to select a location. There are different ways of choosing your starting and destination points: you may select a location using the GPS position, your Bookmarks, a Map, an Address Search or Guides. Alternatively, you may select a recently used location as your starting and destination points.

- Press **Select** to enter a starting position and destination address.



Route Type and Mode

- Press **Menu** and select **4** or **Options** to choose between the (fastest/shortest) route and (car/pedestrian) mode.
- Confirm with **Done** to return to the **Route** tab.

Menu functions

- Press **Menu**.

From here, you may directly calculate your route by pressing **1**. The route **Summary** will be displayed. To view a list of waypoints, press the joystick to the right. To display the Navigation Map press the joystick centered.

With **2** you may start a **Simulation** of your route. Voice commands lead you to your destination. You may repeat the voice commands or choose an alternative route.

By pressing **3** you start directly the **Navigation** system. (See section “How do I navigate with GPS?”)



How Do I Manage my Bookmarks?

The Bookmarks page contains the destinations you have saved as Bookmarks (e.g. from the Guides, from your Address Search, etc.) and your recently chosen points of interest. Your Bookmarks are always linked to your present region (see below).

- Press **6** or select **MySpace** and then press the joystick.



Initially the list of your Bookmarks will be displayed.

- Select an item in the list with the joystick.
- Press the joystick to the right to open the General Map of the object.
- Press the joystick once more to the right to display the **Detail** tab.

Context Menu

- Open the Context Menu by pressing the joystick.

You may use a Bookmark, for example, for navigating and planning your route or for initiating a search in the surrounding area. You may also manage (save, rename, send and delete) your Bookmarks here.

How Can I Select the Region I Seek?

The entire collection of the Maps (e.g. of European capitals) saved on your memory card may be displayed here. You may also purchase additional Maps (regions, countries, etc.) and Guides. The Guides and pre-defined Bookmarks are assigned to specific Regions.

- Press **7** or select **Regions** and then press the joystick.

All the Regions of your memory card may be displayed here. You may select Regions/Cities of your choice. Having selected a Region it will appear at the top of the display in the Main Menu, so that you may easily see which Region you have just activated.

You will find a large selection of further Maps and interesting Premium Guides on www.smart2go.com.